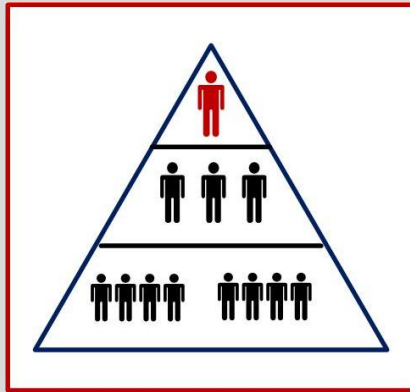


# Networks of Relationships as Parallel Structures

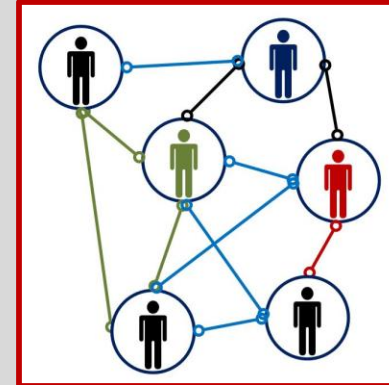
## Formal Structures



### Hierarchical Design

Leadership by Institutional Authority  
Impact through Delegated Responsibility  
Mission = Institutional Integrity

## Parallel Structures



### Network Design

Leadership by Social Trust & Personal Integrity  
Impact through Personal Initiative  
Mission = the Difference that Matters through  
Individual and Collective Action

*The Path to the Future is through the Parallel Structures  
of Networks of Relationships*

