

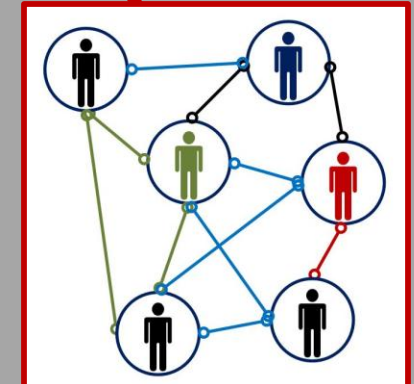
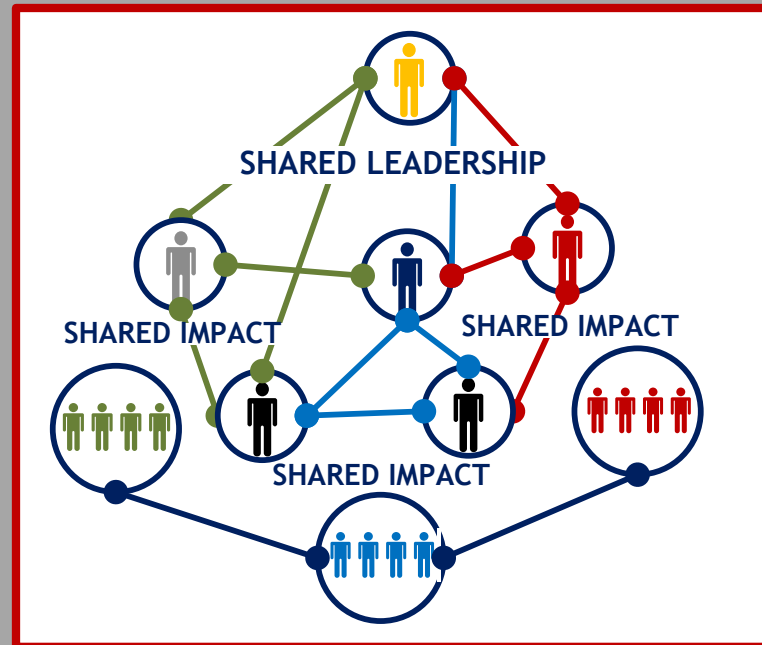
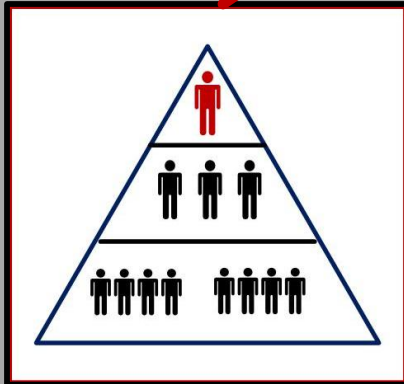
# TRANSITIONS IN ORGANIZATIONAL STRUCTURE

## HIERARCHICAL STRUCTURE

*Leadership* by Institutional Authority  
*Impact* through Delegated Responsibility  
*Mission* = Institutional Integrity

## NETWORK OF RELATIONSHIPS

*Leadership* by Social Trust & Personal Integrity  
*Impact* through Personal Initiative  
*Mission* = the Difference that Matters through Individual and Collective Action



## A COMMUNITY OF LEADERS

Shared Values                      Shared Mission  
 Shared Leadership              Shared Responsibility  
 Shared Impact

Dr. Ed Brenegar / Community of Leadership, LLC